

Filed for and Return to:

Laura Leon, City Clerk
City of East Wenatchee
271 9th Street NE
East Wenatchee, WA 98802

The information contained in this boxed section is for recording purposes only pursuant to RCW 36.18 and RCW 65.04, and is not to be relied upon for any other purpose, and shall not affect the intent of any warranty contained in the document itself.

Document Title: Interlocal Cooperation Agreement Between the City of East Wenatchee and Link Transit for Roadway improvements associated with the East Wenatchee Safe Routes to School Projects (2019-08) and N Kentucky Ave Improvements

Grantor(s): City of East Wenatchee and Link Transit

Grantee(s): City of East Wenatchee and Link Transit

Reference Number(s) of Document Related, Assigned or Released: N/A

Abbreviated Legal Description: N/A

Complete or Additional Legal Description on page ____ of Document – N/A

Assessor's Parcel Number: N/A

Filed with the Auditor pursuant to RCW 39.34.040

Interlocal Cooperation Agreement Between the City of East Wenatchee and Link Transit for Roadway Improvements Associated with the East Wenatchee Safe Routes to School Project and N Kentucky Ave Improvements Project

THIS INTERLOCAL COOPERATION AGREEMENT ("Agreement") is hereby entered into this date by and between Link Transit (the "District"), and the CITY OF EAST WENATCHEE (the "City"), collectively referred to as the "Parties."

RECITALS:

1. The City is engaged in a road improvement project involving 5th Street NE, East Wenatchee, Douglas County, Washington (the "Project"); and,
2. The City has also been awarded funds to begin Design and Right of Way acquisition on Phase 1 of a North Kentucky Ave corridor improvement project; and,
3. Link Transit has expressed an interest in relocating transit stops on 5th Street NE to more suitable locations that offer more safety and ADA accessibility to riders;
4. Link has also expressed an interest in participating in the design work to be done on North Kentucky Ave.; and,
5. By contributing to these projects Link is furthering its Vision 2020 goals of "providing sidewalk and pathway improvements to improve access to transit stops" and "improving safety and security features at bus stops"; and,
6. The City and Link desire to cooperate in the addition of these Transit improvements, recognizing the savings to taxpayers through economies of scale.

NOW, THEREFORE, in consideration of the foregoing, the City and the District agree as follows:

1. Purpose. The purpose of this Agreement is to provide for the design and construction of Link transit improvement as a part of larger City road projects.

2. Scope of Work. Link will contribute a Lump Sum amount of \$100,000 to facilitate the improvements on 5th Street NE for the benefit of Link and its riders, and to fund certain Transit design elements on the N Kentucky Ave Project. On 5th Street NE the City shall implement the improvements sketched in Exhibit A, or similar as approved by Link Transit representatives. The lump sum amount will also fund improvements immediately adjacent to transit stops that increase their safety and accessibility on the 5th Street Project. If the District desires to implement transit improvements on N Kentucky Ave outside of the scope of the City's N Kentucky corridor improvement project a subsequent agreement to pay for construction costs will be required.

3. District's Obligations. The District shall:

- 3.1 Coordinate with City staff if changes to the proposed improvements relating to the 5th Street Project shown in Exhibit A are needed.
- 3.2 Review the engineering design on plan and profile sheets for the 5th Street Project provided by the City's consultant.
- 3.3 Participate in the City's N Kentucky Ave design process. Necessary items include:
 - (a) Preferred locations of future transit stops
 - (b) Accessibility requirements of transit stops
 - (c) Possible construction contribution for transit related improvements on the N Kentucky corridor. A separate agreement would be established for that work prior to the project going to bid.
- 3.4 Provide 95% (\$95,000) of the lump sum amount to the City for the Link 5th Street work once 5th Street Improvements are completed to the satisfaction of the District. The remaining 5% (\$5,000) will be assessed after N Kentucky Ave has reached a 30% design, and Link representatives are satisfied with the planned transit upgrades.
- 3.5 Be responsible for its staff coordination with the City and its consultant.

4. City's Obligations. The City shall:

- 4.1 Incorporate the engineering design and specifications for the District's 5th Street improvements into the City's roadway construction plans for the Project.
- 4.2 Administer the bidding and contract award for the 5th Street Project, including:
 - (a) Preparing bid documents
 - (b) Advertising for construction bids; and
 - (c) Awarding of the construction contract to the lowest responsible bidder based on the lowest total submitted for all schedules of work.
- 4.3 Administer the construction contract for the 5th Street Project, including:
 - (a) Preparation and delivery of Notice of Award and Notice to Proceed to the contractor;

- (b) Scheduling the construction work with the contractor;
 - (c) Disbursement of payments to the roadway contractor; and
 - (d) Administration of change orders, although the District shall have final authority for review and approval of any change order that affects the District's improvements; and
 - (e) Contract closeout.
- 4.4 Be responsible for the administration, management, and budget for the 5th Street Project.
- 4.5 Include the District in design discussions when evaluating how transit will be accommodated in a future N Kentucky Ave Corridor Project. Key discussion points include transit stop location and accessibility.
- 4.6 The City agrees that the District reserves the right to inspect and approve all work done on the District's system prior to the District being obligated to pay the City its costs for such work.

5. Unexpected Changes. The District and the City recognize that unanticipated or unexpected changes to the project plans may be necessary as the project develops. The District and the City will cooperate to address any unanticipated or unexpected circumstances that may require a change in the design or construction of either the 5th Street or Project or the N Kentucky corridor design, and/or that may require additional expenditures beyond those budgeted. The District in the City will further cooperate in the allocation of any such additional costs with consideration of the party (if any) responsible for the cost and the extent to which the changes benefit the District or the City.

6. Duration and Termination. This Agreement shall become effective upon the filing of the executed Agreement with the Douglas County Auditor pursuant to RCW 39.34.040. This agreement will terminate when the Project is completed and when the final payment for the District's portion of the Project is received by the City from the District.

7. Payment by District to City. The City shall request \$95,000 once improvements detailed in Exhibit A are completed to the satisfaction of the District. The City shall request the remaining \$5,000 when the plans for N Kentucky Ave reach 30%, or once District representatives are satisfied with the planned transit upgrades. In the event a change order requested by the District related specifically to work of benefit to the District only occurs, the District shall pay all of the costs of any such change order. The District shall make periodic progress payments to the City. Each progress payment, subject to the terms of this agreement, and the final payment are due within 45 days of the date the payment request is mailed by the City to the District. Any payment past due shall accrue interest at the rate of twelve (12%) per cent per annum until the entire outstanding balance of the past due principal and interest is paid.

8. Records. The City shall keep and maintain accurate and complete cost records pertaining to the Project and this Agreement. The District shall have full access and the right to examine any such records during the term of this Agreement. All records, books, documents and other materials maintained, prepared, or issued by the District in the implementation of this Agreement shall be the property of the District, which shall have the responsibility of the retention and release of those materials.

9. Mutual Indemnity. The District shall indemnify, defend and hold harmless the City, its officers, agents and employees, from and against any and all claims, losses or liability, or any portion thereof, arising from injury or death to persons or damage to property occasioned by any negligent act, omission or failure of the District, its officers, agents, and employees, in connection with the work described in this agreement, or arising out of the District's non-observance or non-performance of any law, ordinance, or regulation applicable to the District's portion of the Project.

The City shall indemnify, defend and hold harmless the District, its officers, agents and employees, from and against any and all claims, losses or liability, or any portion thereof, arising from injury or death to persons or damage to property occasioned by any negligent act, omission or failure of the City, its officers, agents and employees, in connection with the work described in this agreement, or arising out of the City's non-observance or non-performance of any law, ordinance or regulation applicable to the District's portion of the Project.

10. Severability. In the event that any provision of this Agreement shall be determined to be unenforceable or otherwise invalid for any reason, such provision shall be enforced and validated to the extent permitted by law. All other provisions of this Agreement are severable, and the unenforceability or invalidity of any single provision hereof shall not affect the remaining provisions.

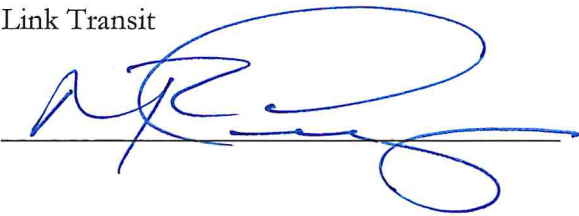
11. Construction. This agreement contains the entire agreement between the Parties with respect to the subject matter hereof and supersedes all prior agreements or understandings among the Parties with respect thereto. This Agreement may be amended only by an agreement in writing signed by the Parties.

12. Mutual Negotiation and Construction. This Agreement and each of the terms and provisions hereof are deemed to have been explicitly negotiated between, and mutually drafted by, the Parties, and the language in all parts of this Agreement shall, in all cases, be construed according to its fair meaning and not strictly for or against either Party.

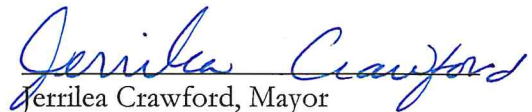
13. Governing Law; Venue. This Agreement is governed by the laws of the state of Washington, without regard to its conflict of law provisions. The jurisdiction of any action hereunder shall be in the Superior Court, Douglas County, Washington.

IN WITNESS WHEREOF, the parties hereto have executed this Agreement on this 7th day of November, 2023.

Link Transit



CITY OF EAST WENATCHEE


Jerrilea Crawford, Mayor

Attest:


Laura Leon, City Clerk

EXHIBIT A

See attached plan set.

CITY OF EAST WENATCHEE



CONTRACT NO. TA-6786
KENROY ELEMENTARY SAFE ROUTES TO SCHOOL
 PROJECT NO. 2019-08 - FEDERAL AID NUMBER SRTS-6906(001)
 (SCHEDULE A)

STERLING INTERMEDIATE SAFE ROUTES TO SCHOOL
 PROJECT NO. 2019-09 - FEDERAL AID NUMBER SRTS-9909(004)
 (SCHEDULE B)

MAYOR
 JERRILEA CRAWFORD

PUBLIC WORKS MANAGER
 GARREN MELTON

CITY COUNCIL
 MATTHEW HEPNER SASHA SLEIMAN
 CHRISTINE JOHNSON JOHN STERK
 SHAYNE MAGDOFF ROBERT TIDD
 HARRY RAAB

EAST WENATCHEE WATER DISTRICT DOMESTIC WATER IMPROVEMENTS

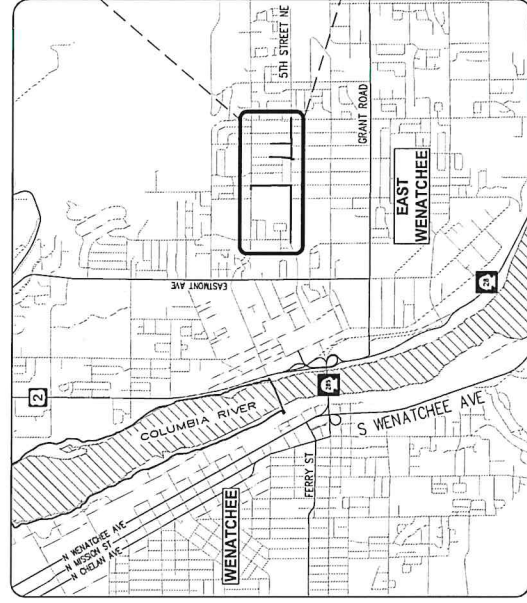
PROJECT NO. 21-0138-05
 (SCHEDULE C)

LOCALLY FUNDED IMPROVEMENTS

(SCHEDULE D)

TITLE	SHT NO.
GENERAL	1
COVER	2
GENERAL NOTES	3
LEGEND & ABBREVIATIONS	4
SURVEY CONTROL AND SHEET INDEX	5
TYPICAL SECTIONS	6-7
TYPICAL DETAILS	8-10
TYPICAL WALL DETAILS	11
STAIRS AND RAMP DETAILS	12-13
TYPICAL WALL AND PROFILES	14-15
RIGHT OF WAY PLANS	16-17
INDEX - KENROY AND STERLING OVERALL	18
KENROY ELEMENTARY SCHOOL	19-21
SITE PREPARATION AND TEST PLANS	22-29
ROADWAY PLAN AND PROFILES	30-34
DRAINAGE PLAN AND PROFILES	35-39
DRAINAGE CROSSING PLAN AND PROFILES	40-50
DRAINAGE DETAILS	51-63
WATERMAIN PLANS & DETAILS (SCH C)	64-66
UTILITY PLANS	67-71
INTERSECTION AND CURB LAYOUT PLANS	72-78
DRIVEWAY PLAN AND PROFILES	79-85
DRIVEWAY SCHEDULE AND DETAILS	86-91
CHANNELIZATION PLANS	92-93
ILLUMINATION AND REFER PLANS	94
REF DETAILS AND DIAGRAMS	95-97
LANDSCAPE AND RESTORATION PLANS	98-106
LANDSCAPE AND RESTORATION DETAILS	107-119
LANDSCAPE AND RESTORATION DETAILS	120-122
IRRIGATION DETAILS	123
IRRIGATION PLAN	124-131
GENERAL NOTES	132-134
TEMPORARY TRAFFIC CONTROL PLAN	135-139
GENERAL NOTES	140-145
TEMPORARY TRAFFIC CONTROL PLAN	146
GENERAL NOTES	147
TEMPORARY TRAFFIC CONTROL DETAILS	148-153

TITLE	SHT NO.
GENERAL	1
COVER	2
GENERAL NOTES	3
LEGEND & ABBREVIATIONS	4
SURVEY CONTROL AND SHEET INDEX	5
TYPICAL SECTIONS	6-7
TYPICAL DETAILS	8-10
TYPICAL WALL DETAILS	11
STAIRS AND RAMP DETAILS	12-13
TYPICAL WALL AND PROFILES	14-15
RIGHT OF WAY PLANS	16-17
INDEX - KENROY AND STERLING OVERALL	18
KENROY ELEMENTARY SCHOOL	19-21
SITE PREPARATION AND TEST PLANS	22-29
ROADWAY PLAN AND PROFILES	30-34
DRAINAGE PLAN AND PROFILES	35-39
DRAINAGE CROSSING PLAN AND PROFILES	40-50
DRAINAGE DETAILS	51-63
WATERMAIN PLANS & DETAILS (SCH C)	64-66
UTILITY PLANS	67-71
INTERSECTION AND CURB LAYOUT PLANS	72-78
DRIVEWAY PLAN AND PROFILES	79-85
DRIVEWAY SCHEDULE AND DETAILS	86-91
CHANNELIZATION PLANS	92-93
ILLUMINATION AND REFER PLANS	94
REF DETAILS AND DIAGRAMS	95-97
LANDSCAPE AND RESTORATION PLANS	98-106
LANDSCAPE AND RESTORATION DETAILS	107-119
LANDSCAPE AND RESTORATION DETAILS	120-122
IRRIGATION DETAILS	123
IRRIGATION PLAN	124-131
GENERAL NOTES	132-134
TEMPORARY TRAFFIC CONTROL PLAN	135-139
GENERAL NOTES	140-145
TEMPORARY TRAFFIC CONTROL PLAN	146
GENERAL NOTES	147
TEMPORARY TRAFFIC CONTROL DETAILS	148-153



VICINITY MAP
 NOT TO SCALE

Link Bus Route 11 (current)
 Link Bus Route ## (future)

SYMBOL KEY

- Existing stop (to remain/not in project)
- Existing stop (to be improved in project)
- Future stop (not in project)
- Future stop (to be built in project)



STERLING INTERMEDIATE
 PROJECT LOCATION
 (SCHEDULE B & D)

KENROY ELEMENTARY
 PROJECT LOCATION
 (SCHEDULE A, SCHEDULE C & SCHEDULE D)

New Type 3 driveway for
 future Kenroy Elementary
 School improvements



CONFIRMED
 PLANS
 JUNE 2023

CALL 2 DAYS
 BEFORE YOU DIG
 811



VICINITY MAP
 NOT TO SCALE



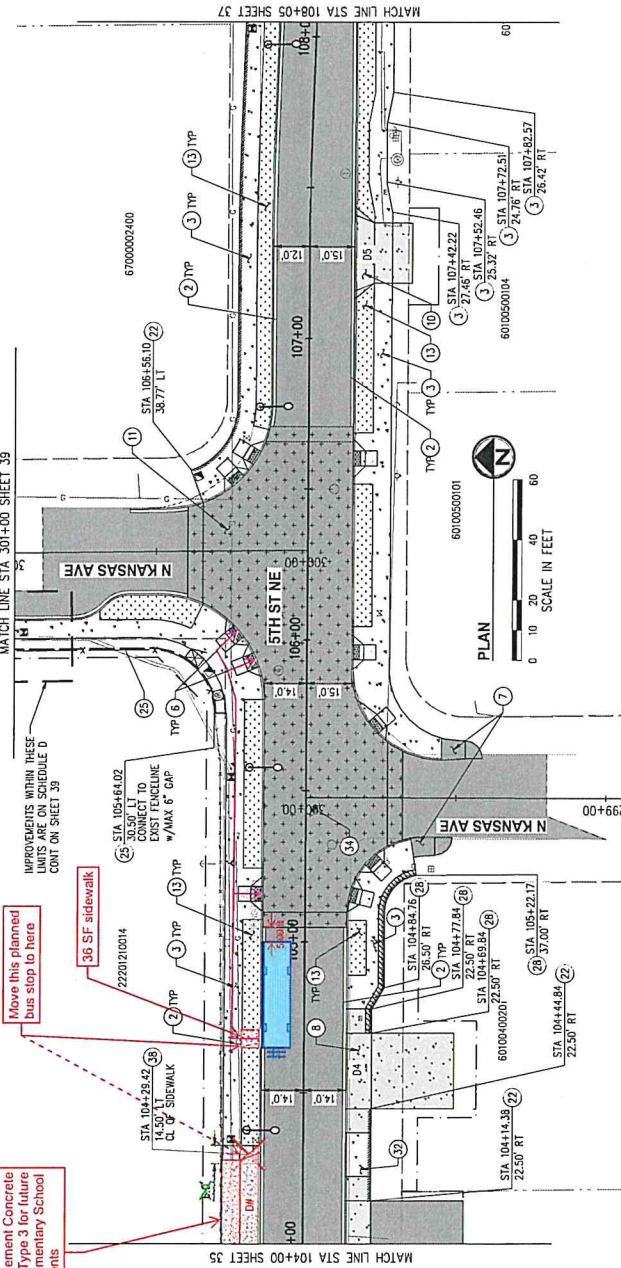
03-15-2023

Add new Cement Concrete Driveway, Type 3 for future Kenroy Elementary School Improvements

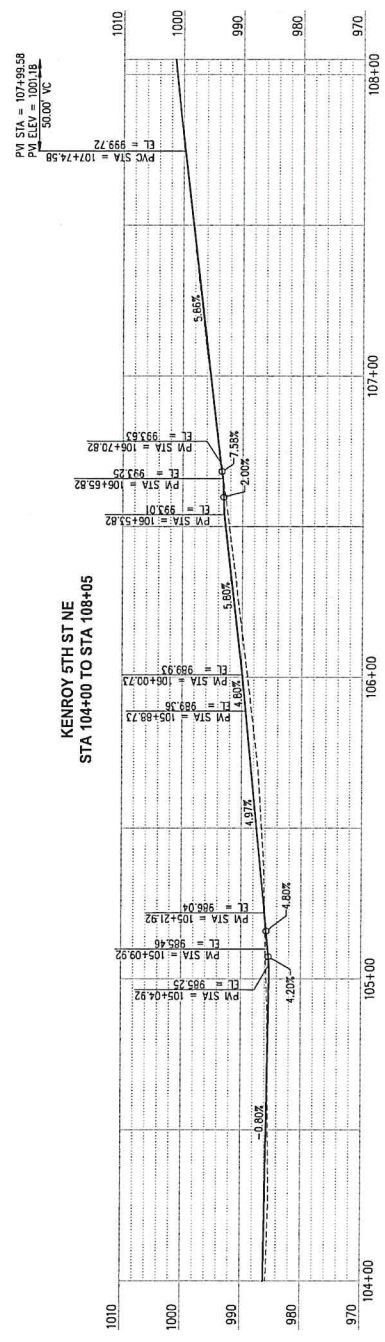
Move this planned bus stop to here

IMPROVEMENTS WITHIN THESE LIMITS ARE ON SCHEDULE D CONT ON SHEET 39

IMPROVEMENTS WITHIN THESE LIMITS ARE ON SCHEDULE D CONT ON SHEET 39



KENROY 5TH ST NE
STA 104+00 TO STA 108+00



GENERAL NOTES

- SEE GENERAL PROJECT NOTES, SHEET 2.
- CONTRACTOR SHALL CONSTRUCT CONCRETE CURB AND GUTTER, SIDEWALK, AND NEW PAVEMENT SECTIONS PER TYPICAL SECTIONS AND DETAILS (SHEETS 6-9), AND INTERSECTION AND CURB LAYOUT PLANS (SHEETS 72-85).
- FOR ROADWAY LEGEND, SEE SHEET 3.
- ALL VALVES AND JUNCTION BOXES IN PEDESTRIAN ACCESS ROUTE SHALL BE SLIP RESISTANT PER WSDOT STD SPEC 9-232(J)(A) AND 9-232(G)(A).

CONSTRUCTION NOTES

- MATCH EXISTING.
- CONSTRUCT CEMENT CONCRETE CURB AND GUTTER PER TYPICAL SECTIONS, SHEETS 6-7, AND WSDOT STD PLANS F-10.16-00 AND F-10.12-04.
- CONSTRUCT CEMENT CONCRETE SIDEWALK PER TYPICAL SECTIONS, SHEETS 6-7, AND WSDOT STD PLAN F-30.10-04.
- CONSTRUCT CEMENT CONCRETE PERPENDICULAR CURB RAMP TYPE A PER INTERSECTION AND CURB LAYOUT PLANS, SHEETS 72-85, AND WSDOT STD PLAN F-10.15-04.
- CONSTRUCT HMA SIDEWALK TRANSITION RAMP PER DETAIL, SHEET 8, AND PER INTERSECTION AND CURB LAYOUT PLANS, SHEETS 72-85.
- CONSTRUCT CEMENT CONCRETE DRIVEWAY ENTRANCE TYPE J PER INTERSECTION AND CURB LAYOUT PLANS, SHEETS 86-93, AND WSDOT STD PLAN F-26.10-04.
- CONSTRUCT BASED INTERSECTION PER INTERSECTION AND CURB LAYOUT PLANS, SHEETS 86-93, AND BASED INTERSECTION AND CROSSWALK DETAIL, SHEET 8.
- LANDSCAPE BUFFER. SEE LANDSCAPE PLANS AND DETAILS, SHEETS 120-128.
- CONSTRUCT THICKENED EDGE SIDEWALK PER DETAIL, SHEET 8.
- REPLACE FENCE 4' BEHIND PROPOSED SIDEWALK.
- W/IR COATED CHAINLINK FENCE PER DETAIL, SHEET 8, AND MODULAR BLOCK FILL WALL DETAIL, SHEET 13.
- CONSTRUCT DEPRESSED SIDEWALK BETWEEN DEPRESSED DRIVEWAYS. SEE DRIVEWAY PLAN AND PROFILES, SHEETS 86-93, FOR "IE-IN" ELEVATIONS.
- REPLACE SURVEY MONUMENT AND MONUMENT CASE AND COVER PER WSDOT STD PLAN A-10.30.
- DETECTABLE WARNING SURFACE, CAST-IN-PLACE PER WSDOT STD PLAN F-45.10.



KPG
P S O N A S
WENATCHEE
215 Wenatchee Avenue, Suite 220
Wenatchee, WA 98801
Sharon J. Neuman | P.E. License

CONFIRMED PLANS
JUNE 2023



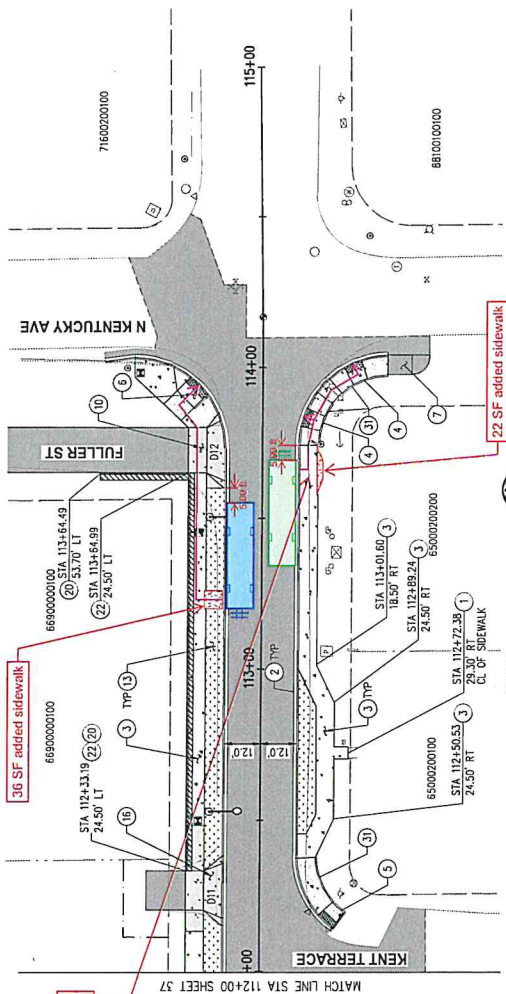
**EAST WENATCHEE
SAFE ROUTES TO SCHOOL
KENROY ELEMENTARY (SCHA & D)**

ROADWAY PLAN AND PROFILE
5TH STREET NE
STA 104+00 TO STA 108+05 (SCHA & D)

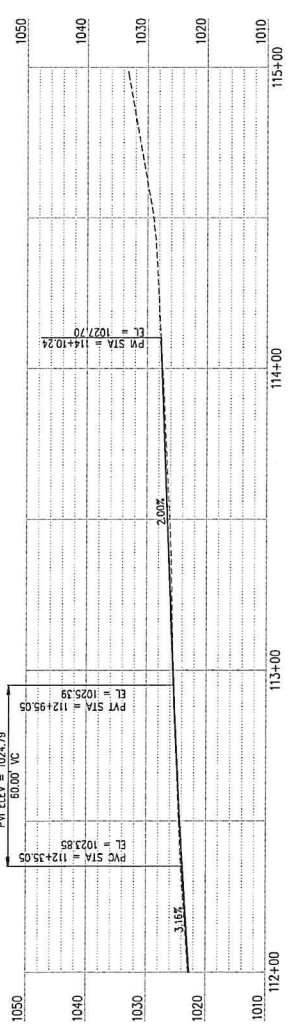
- GENERAL NOTES**
1. SEE GENERAL PROJECT NOTES, SHEET 2.
 2. CONTRACTOR SHALL CONSTRUCT CEMENT CONC. CURB AND GUTTER, SIDEWALK, AND NEW PAVEMENT SECTIONS PER TYPICAL SECTIONS AND DETAILS (SHEETS 8-9), AND INTERSECTION AND CURB LAYOUT PLANS (SHEETS 72-85).
 3. FOR ROADWAY LEGEND, SEE SHEET 3.
 4. ALL VAULTS AND JUNCTION BOXES IN PEDESTRIAN ACCESS ROUTE SHALL BE SLIP RESISTANT PER WSDOT STD SECC 9-29.2(C)(M) AND 9-29.2(Q)(A).

CONSTRUCTION NOTES

- 1 MATCH EXISTING.
- 2 CONSTRUCT CEMENT CONC CURB AND GUTTER PER TYPICAL SECTIONS, SHEETS 6-7, AND WSDOT STD PLANS F-1016-00 AND F-1017-04.
- 3 CONSTRUCT CEMENT CONC SIDEWALK PER TYPICAL SECTIONS, SHEETS 6-7, AND WSDOT STD PLAN F-3010-04.
- 4 CONSTRUCT CEMENT CONC. PARALLEL CURB RAMP TYPE A PER INTERSECTION AND CURB LAYOUT PLANS, SHEETS 72-85, AND WSDOT STD PLAN F-4019-03.
- 5 CONSTRUCT CEMENT CONC. PARALLEL CURB RAMP TYPE B PER INTERSECTION AND CURB LAYOUT PLANS, SHEETS 72-85, AND WSDOT STD PLAN F-4019-03.
- 6 CONSTRUCT CEMENT CONC. PERPENDICULAR CURB RAMP TYPE A PER INTERSECTION AND CURB LAYOUT PLANS, SHEETS 72-85, AND WSDOT STD PLAN F-4019-03.
- 7 CONSTRUCT HMA SIDEWALK TRANSITION RAMP PER DETAIL SHEET 8 AND PER INTERSECTION AND CURB LAYOUT PLANS, SHEETS 72-85.
- 8 CONSTRUCT CEMENT CONC DRIVEWAY ENTRANCE TYPE 3 PER DRIVEWAY PROFILES, SHEETS 88-93, AND WSDOT STD PLAN F-8010-04.
- 9 LANDSCAPE BUFFER, SEE LANDSCAPE PLANS AND DETAILS, SHEETS 120-128.
- 10 CONSTRUCT CEMENT CONC. DRIVEWAY ENTRANCE TYPE 3 MODIFIED (DEPRESSED) PER DRIVEWAY PROFILES, SHEETS 88-93, AND DRIVEWAY TYPE 3 (DEPRESSED) DETAIL SHEET 94. SEE DRIVEWAY ENTRANCE AND CURB LAYOUT PLANS FOR CONSTRUCTION OF DEPRESSED DRIVEWAY PEDESTRIAN RAMPS.
- 11 CONSTRUCT MODIFIED PARALLEL CURB RAMP PER INTERSECTION AND CURB LAYOUT PLANS, SHEETS 72-85.
- 12 CONSTRUCT MODIFIED PARALLEL CURB RAMP PER INTERSECTION AND CURB LAYOUT PLANS, SHEETS 72-85.
- 13 CONSTRUCT IN-LINE SIDEWALK TRANSITION RAMP PER DETAIL SHEET 8 AND PER INTERSECTION AND CURB LAYOUT PLANS, SHEETS 72-85.
- 14 CONSTRUCT THICKENED EDGE SIDEWALK PER DETAIL SHEET 8.
- 15 INSTALL PEDESTRIAN CURB PER WSDOT STD PLAN F-1012-04.



**KENROY 5TH ST NE
STA 112+00 TO STA 115+00**



NO.	DATE	BY	APPR.	REVISIONS

APPROVED BY	DATE
ENGINEERING MANAGER	
PROJECT MANAGER	
PROJECT ENGINEER	

NO.	DATE	BY	APPR.	REVISIONS

KPG P S O M A S
 Wenatchee
 215 S. Wenatchee Blvd., Suite 200
 Wenatchee, WA 98801-2027
 Skagitzi | Tacoma | KPG.com

CONFIRMED PLANS
 JUNE 2023



**EAST WENATCHEE
SAFE ROUTES TO SCHOOL
KENROY ELEMENTARY (SCH A)**

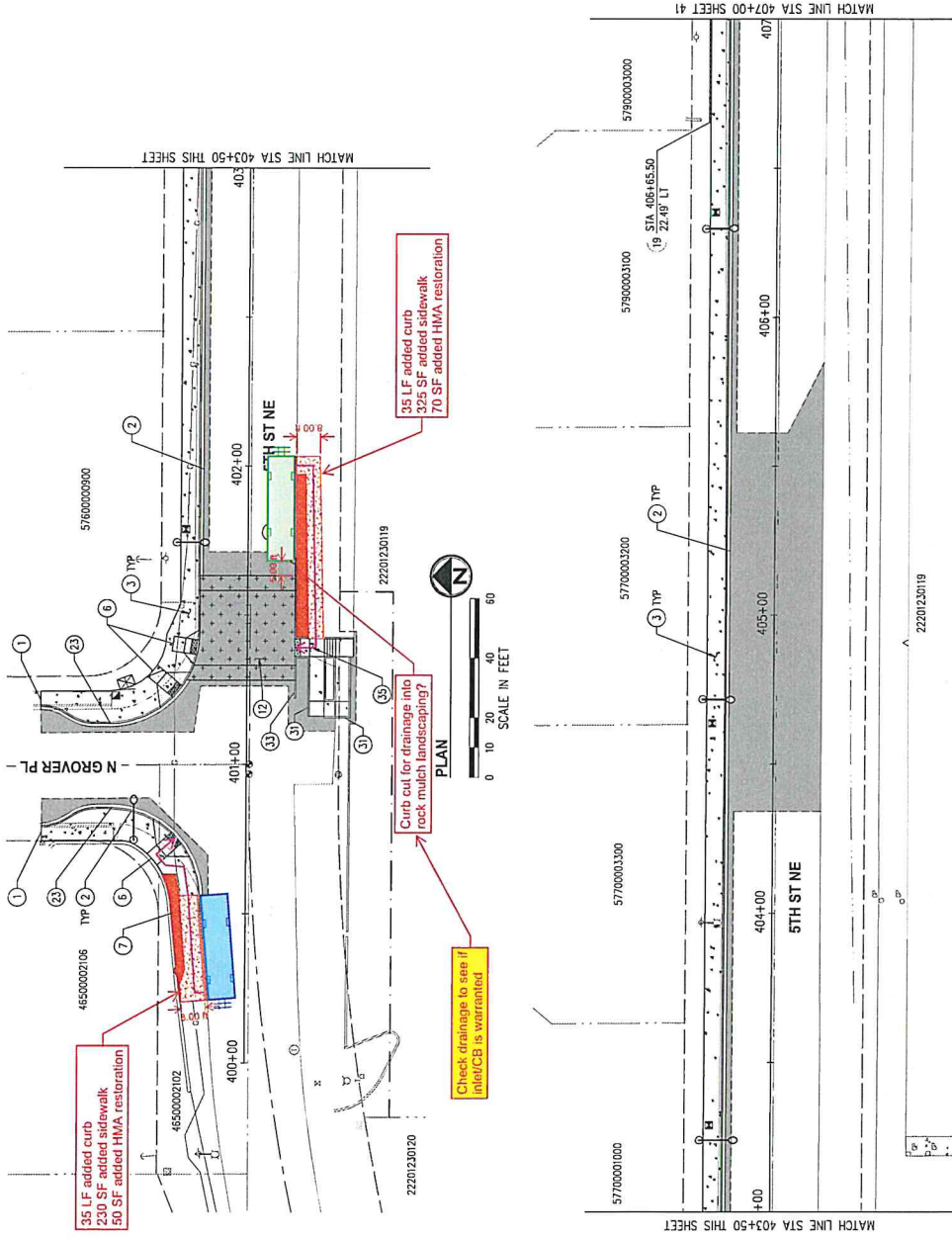
ROADWAY PLAN AND PROFILE
 5TH STREET NE
 STA 112+00 TO STA 115+00 (SCH A)
 KPG PROJECT No. 19088A | SHEET 36 OF 153

GENERAL NOTES

1. SEE GENERAL PROJECT NOTES, SHEET 2.
2. CONTRACTOR SHALL CONSTRUCT CEMENT CONC. CURB AND GUTTER, SIDEWALK, AND NEW PAVEMENT SECTIONS PER TYPICAL SECTIONS AND DETAILS (SHEETS 6-9), AND INTERSECTION AND CURB LAYOUT PLANS (SHEETS 72-85).
3. FOR ROADWAY LEGEND, SEE SHEET 1.
4. ALL VAULTS AND JUNCTION BOXES IN PEDESTRIAN ACCESS ROUTE SHALL BE SLIP RESISTANT PER WSDOT STD SPEC 9-29.2(1)(A) AND 9-29.2(2)(A).

CONSTRUCTION NOTES

- 1) MATCH EXISTING.
- 2) CONSTRUCT CEMENT CONC CURB AND GUTTER PER TYPICAL SECTIONS, SHEETS 6-7, AND WSDOT STD PLANS F-1016-00 AND F-1012-04.
- 3) CONSTRUCT CEMENT CONC SIDEWALK PER TYPICAL SECTIONS, SHEETS 6-7, AND WSDOT STD PLAN F-3010-04.
- 4) CONSTRUCT CEMENT CONC. PERPENDICULAR CURB RAMP TYPE A PER INTERSECTION AND CURB LAYOUT PLANS, SHEETS 72-85, AND WSDOT STD PLAN F-4015-04.
- 5) CONSTRUCT HMA SIDEWALK TRANSITION RAMP PER DETAIL, SHEET 8, AND PER INTERSECTION AND CURB LAYOUT PLANS, SHEETS 72-85.
- 6) CONSTRUCT RAISED CROSSWALK PER INTERSECTION AND CURB LAYOUT PLANS, SHEETS 72-85, AND RAISED INTERSECTION AND CROSSWALK DETAIL, SHEET 9.
- 7) CONSTRUCT CONCRETE INTEGRAL CURB PER DETAIL, SHEET 13, AND WALL PLAN AND PROFILES, SHEETS 14-17.
- 8) SEE INTERSECTION AND CURB LAYOUT PLANS, SHEETS 72-85, FOR DETAILED LAYOUT INFORMATION.
- 9) INSTALL PEDESTRIAN CURB PER WSDOT STD PLAN F-1012-04.
- 10) CONSTRUCT CONCRETE CURB AND GUTTER TRANSITION PER TYPICAL DETAIL, SHEET 8.
- 11) CONSTRUCT CEMENT CONC. RAMP AND STAIRS ASSEMBLY PER DETAILS, SHEET 11.



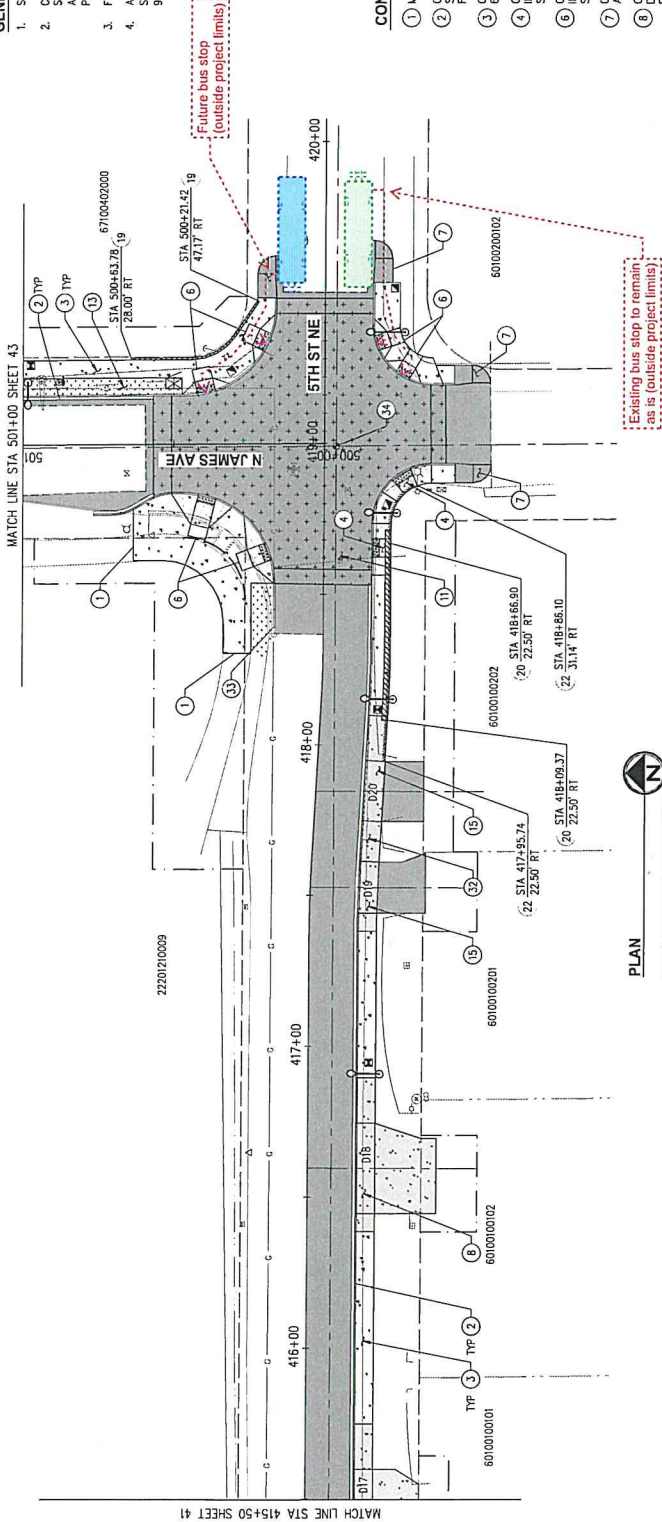
<p>APPROVED BY</p> <p>ENGINEERING MANAGER DATE</p> <p>PROJECT MANAGER DATE</p> <p>PROJECT ENGINEER DATE</p>		<p>REVISIONS</p>	<p>CONFORMED PLANS</p> <p>JUNE 2023</p>		<p>EAST WENATCHEE SAFE ROUTES TO SCHOOL STERLING INTERMEDIATE (SCH B)</p>	<p>ROADWAY PLANS 5TH STREET NE STA 400+00 TO STA 407+00 (SCH B)</p>	<p>KPG PROJECT No. 19089A SHEET 40 OF 153</p>
<p>DATE BY DATE</p> <p>DATE BY DATE</p> <p>DATE BY DATE</p>							

GENERAL NOTES

1. SEE GENERAL PROJECT NOTES, SHEET 2.
2. CONTRACTOR SHALL CONSTRUCT CONC. CURB AND GUTTER, SIDEWALK, AND NEW PAVEMENT SECTIONS PER TYPICAL SECTIONS AND DETAILS (SHEETS 6-9), AND INTERSECTION AND CURB LAYOUT PLANS (SHEETS 72-85).
3. FOR ROADWAY LEGEND, SEE SHEET 3.
4. ALL VAULTS AND JUNCTION BOXES IN PEDESTRIAN ACCESS ROUTE SHALL BE SLIP RESISTANT PER WSDOT STD SPEC 9-29.2(1) AND 9-29.2(2)A.

CONSTRUCTION NOTES

- 1 MATCH EXISTING.
- 2 CONSTRUCT CEMENT CONC. CURB AND GUTTER PER TYPICAL SECTIONS, SHEETS 6-7, AND WSDOT STD PLANS F-10.16-00 AND F-10.12-04.
- 3 CONSTRUCT CEMENT CONC. SIDEWALK PER TYPICAL SECTIONS, SHEETS 6-7, AND WSDOT STD PLAN F-30.10-04.
- 4 CONSTRUCT CEMENT CONC. PARALLEL CURB RAMP TYPE A PER INTERSECTION AND CURB LAYOUT PLANS, SHEETS 72-85, AND WSDOT STD PLAN F-40.12-03.
- 5 CONSTRUCT CEMENT CONC. PERPENDICULAR CURB RAMP TYPE A PER INTERSECTION AND CURB LAYOUT PLANS, SHEETS 72-85, AND WSDOT STD PLAN F-40.15-04.
- 6 CONSTRUCT HMA SIDEWALK TRANSITION RAMP PER DETAIL, SHEET 8, AND PER INTERSECTION AND CURB LAYOUT PLANS, SHEETS 72-85.
- 7 CONSTRUCT CEMENT CONC. DRIVEWAY ENTRANCE TYPE 1 PER DRIVEWAY PROFILES, SHEETS 86-93, AND WSDOT STD PLAN F-80.10-04.
- 8 CONSTRUCT RAISED INTERSECTION PER INTERSECTION AND CURB LAYOUT PLANS, SHEETS 72-85, AND RAISED INTERSECTION AND CROSSWALK DETAIL, SHEET 9.
- 9 LANDSCAPE BUFFER. SEE LANDSCAPE PLANS AND DETAILS, SHEETS 120-128.
- 10 CONSTRUCT CEMENT CONC. DRIVEWAY ENTRANCE TYPE 1 MODIFIED (ONE SLOPE) PER DRIVEWAY PROFILES, SHEETS 86-93.
- 11 CONSTRUCT CEMENT CONCRETE INTEGRAL CURB PER DETAIL, SHEET 13, AND WALL PLAN AND PROFILES, SHEETS 14-17.
- 12 CONSTRUCT MODULAR BLOCK WALL PER DETAIL, SHEET 13 AND WALL PROFILES, SHEETS 14-17.
- 13 CONSTRUCT THICKENED EDGE SIDEWALK PER DETAIL, SHEET 8.
- 14 CONSTRUCT DEPRESSED SIDEWALK BETWEEN DEPRESSED DRIVEWAYS. SEE DRIVEWAY PLAN AND PROFILES, SHEETS 86-93, FOR 1E-IN ELEVATIONS.
- 15 CONSTRUCT CONCRETE CURB AND GUTTER TRANSITION PER TYPICAL DETAIL, SHEET 8.
- 16 REPLACE SURVEY MONUMENT AND MONUMENT CASE AND COVER PER WSDOT STD PLAN A-10.30.



CONFORMED PLANS
JUNE 2023

KPG P S O M A S
Wenatchee
200 Wenatchee Avenue, Suite 271
Spokane | Tacoma | Portland



NO.	DATE	BY	APPROVED	REVISIONS

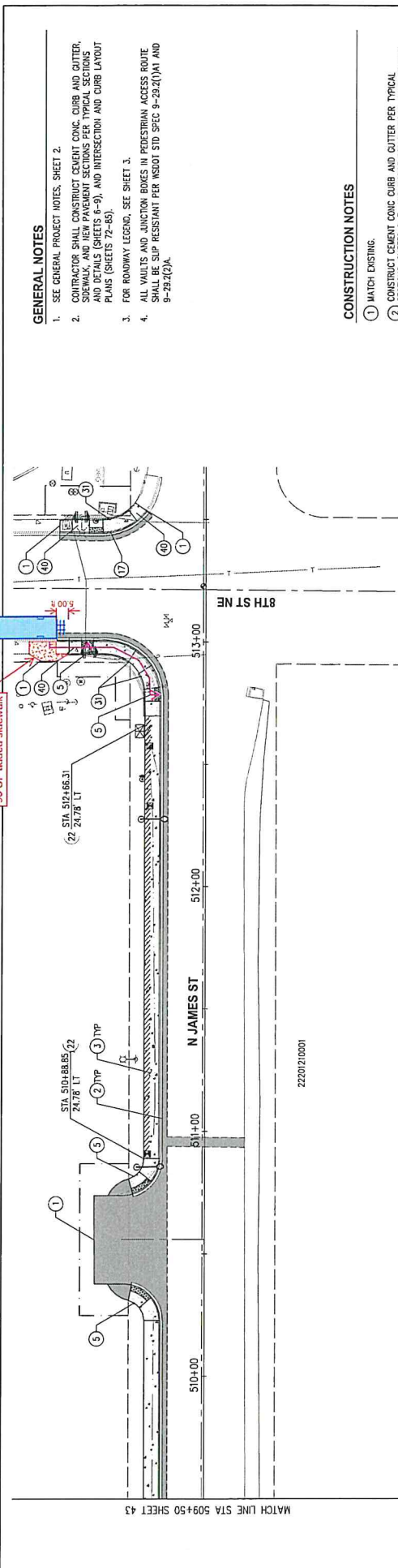
APPROVED BY	DATE
ENGINEERING MANAGER	
PROJECT MANAGER	
PROJECT ENGINEER	

NO.	DATE	BY	APPROVED	REVISIONS

NO.	DATE	BY	APPROVED	REVISIONS

ROADWAY PLANS
5TH STREET NE
STA 415+50 TO STA END (SCH B)
KPG PROJECT No. 19068A | SHT 42 OF 153

EAST WENATCHEE
SAFE ROUTES TO SCHOOL
STERLING INTERMEDIATE (SCH B)

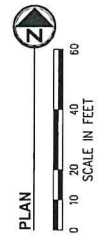


GENERAL NOTES

1. SEE GENERAL PROJECT NOTES, SHEET 2.
2. CONTRACTOR SHALL CONSTRUCT CEMENT CONC. CURB AND GUTTER, SIDEWALK, AND NEW PAVEMENT SECTIONS PER TYPICAL SECTIONS AND DETAILS (SHEETS 6-9), AND INTERSECTION AND CURB LAYOUT PLANS (SHEETS 72-85).
3. FOR ROADWAY LEGEND, SEE SHEET 3.
4. ALL VAULTS AND JUNCTION BOXES IN PEDESTRIAN ACCESS ROUTE SHALL BE SIP RESISTANT PER WSDOT STD SPEC 9-29.2(A) AND 9-29.2(A2).

CONSTRUCTION NOTES

- 1 MATCH EXISTING.
- 2 CONSTRUCT CEMENT CONC. CURB AND GUTTER PER TYPICAL SECTIONS, SHEETS 6-7, AND WSDOT STD PLANS F-10.16-00 AND F-10.12-04.
- 3 CONSTRUCT CEMENT CONC. SIDEWALK PER TYPICAL SECTIONS, SHEETS 6-7, AND WSDOT STD PLAN F-30.10-04.
- 5 CONSTRUCT CEMENT CONC. PARALLEL CURB RAMP TYPE B PER INTERSECTION AND CURB LAYOUT PLANS, SHEETS 72-85, AND WSDOT STD PLAN F-40.12-03.
- 17 CONSTRUCT MODIFIED PARALLEL CURB RAMP PER INTERSECTION AND CURB LAYOUT PLANS, SHEETS 72-85.
- 22 CONSTRUCT THICKENED EDGE SIDEWALK PER DETAIL, SHEET 8.
- 31 INSTALL PEDESTRIAN CURB PER WSDOT STD PLAN F-10.12-04.
- 40 CONSTRUCT CEMENT CONC. SIDEWALK TRANSITION PANEL PER DETAIL SHEET 10.



		CONFORMED PLANS JUNE 2023		EAST WENATCHEE SAFE ROUTES TO SCHOOL STERLING INTERMEDIATE (SCH B)	ROADWAY PLANS N JAMES STREET STA 509+50 TO END (SCH B)	KPG PROJECT No. 19088A SHT 44 OF 153	

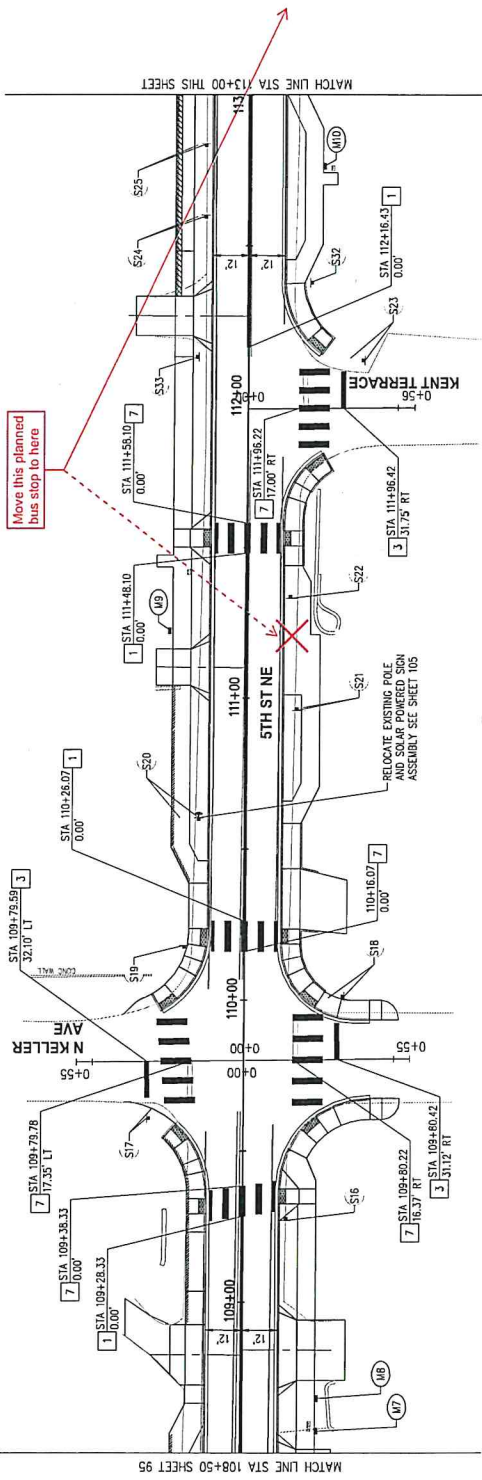
GENERAL NOTES

- SEE GENERAL PROJECT NOTES, SHEET 2.
- CONTRACTOR SHALL REMOVE ALL EXISTING CHANNELIZATION THAT IS IN CONFLICT WITH NEW CHANNELIZATION BY GRINDING.
- ALL NEW AND RELOCATED SIGNS SHALL HAVE NEW POSTS, POST BASES, AND HARDWARE IN ACCORDANCE WITH WSDOT STANDARD PLANS, SECTION C AND DETAIL ON SHEET 9.
- ALL NEW PAVEMENT MARKINGS SHALL CONFORM TO THE LATEST EDITION OF THE WSDOT STANDARD SPECIFICATIONS AND STANDARD PLANS, SECTION M.
- INSTALL SIGNS IN PEDESTRIAN AREAS SHALL BE LOCATED OUTSIDE OF PEDESTRIAN ACCESS ROUTE AND A MINIMUM OF 7'0" ABOVE THE WALKING SURFACE.
- ALL NEW SIGNS SHALL BE SIZED PER MUTCD 2B.03 AND 2C.04 FOR VISIBILITY. RELOCATED SIGNS ARE ASSURED TO MEET THE REQUIREMENTS, NOTIF THE ENGINEER IF DEFICIENCIES ARE ENCOUNTERED.
- FOR DETAILS OF NEW POWERED SIGNS, SEE ILLUMINATION PLANS, SHEETS 103-116.
- EXISTING SOLAR POWERED SIGNS ARE TO BE RELOCATED AS SHOWN ON THE PLANS. CONTRACTOR SHALL INSTALL NEW FOUNDATIONS AND ANCHOR BOLTS PER MANUFACTURER'S RECOMMENDATION.
- CONTRACTOR SHALL RELOCATE MARGOVES USING NEW POSTS AS SHOWN ON DETAIL SHEET 9. CONTRACTOR MAY USE EXISTING POST WITH APPROVAL FROM THE ENGINEER.
- EXISTING SIGNS NOT EXPLICITLY NOTED ON PLANS SHALL BE PROTECTED AND REMAIN IN PLACE.
- FOR STANDARD SIGN DESIGNATION INFO SEE SHEET 97.

MAILBOX SCHEDULE		
SIGN NO.	STATION	OFFSET
M7	108+57.39	25.00' RT
M8	108+68.20	25.00' RT
M9	114+22.23	25.00' LT
M10	114+76.49	25.00' RT

CHANNELIZATION NOTES

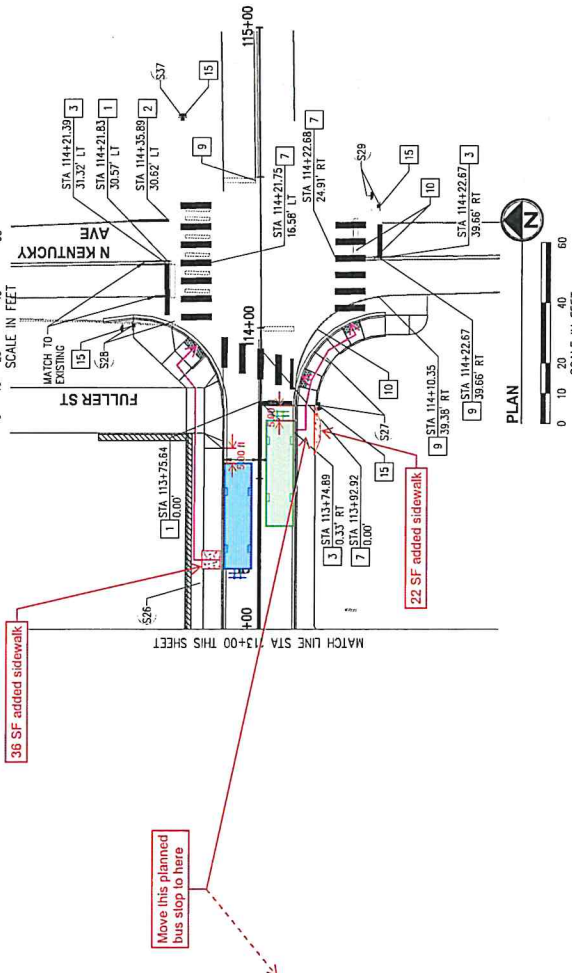
- PAINT LINE, 4" DOUBLE CENTERLINE, YELLOW PAINT, STRIPING PER WSDOT STANDARD PLAN M-20.10.
- PAINT LINE, 4" WHITE PAINT EDGE LINE & SOLID LANE LINE PER WSDOT STANDARD PLAN M-20.10.
- PLASTIC STOP LINE, 18" THERMOPLASTIC STOP LINE PER WSDOT STANDARD PLAN M-4.60.
- PLASTIC SPEED BUMP SYMBOL PER DETAIL (SEE SHEET 10).
- PLASTIC CROSSWALK LINE, 10" LENGTH THERMOPLASTIC CROSSWALK LINES PER WSDOT STANDARD PLAN M-15.10. SPACING VARIES AS SHOWN ON THE PLANS. VERIFY WITH ENGINEER IN THE FIELD.
- PRESERVE EXISTING STRIPING/PAVEMENT MARKING TO REMAIN.
- REMOVE CONFLICTING CHANNELIZATION.
- FURNISH AND INSTALL SOLAR POWERED FLASHING LED ENHANCED SIGN ASSEMBLY, SPECIAL PROVISION P-21 AND SHEET 100.



SIGN SCHEDULE		
SIGN NO.	STATION	OFFSET
S16	109+27.06	14.50' RT
S17	109+60.77	31.92' LT
S18	110+01.26	33.33' RT
S19	110+17.89	19.95' LT
S20	110+60.32	15.50' LT
S21	110+95.95	17.00' RT
S22	111+33.18	14.50' RT
S23	112+12.20	38.75' RT
S24	112+59.85	14.50' LT
S25	112+63.79	14.50' LT
S32	112+37.90	20.50' RT
S33	112+13.19	16.50' LT

SIGN SCHEDULE		
SIGN NO.	STATION	OFFSET
S16	109+27.06	14.50' RT
S17	109+60.77	31.92' LT
S18	110+01.26	33.33' RT
S19	110+17.89	19.95' LT
S20	110+60.32	15.50' LT
S21	110+95.95	17.00' RT
S22	111+33.18	14.50' RT
S23	112+12.20	38.75' RT
S24	112+59.85	14.50' LT
S25	112+63.79	14.50' LT
S32	112+37.90	20.50' RT
S33	112+13.19	16.50' LT

SIGN SCHEDULE		
SIGN NO.	STATION	OFFSET
S26	113+15.28	19.50' LT
S27	113+74.24	19.50' RT
S28	114+00.58	42.67' LT
S29	114+39.84	39.90' RT
S37	114+70.01	25.75' LT



APPROVED BY

DATE	BY	APPROVED

APPROVED BY

ENGINEERING MANAGER	DATE
PROJECT MANAGER	DATE
PROJECT ENGINEER	DATE

CONFORMED PLANS
JUNE 2023

KPG PSONIAS
22 S WENTWORTH AVE, SUITE 221
SEATTLE, WA 98104
STATE | TRUCK | P&E

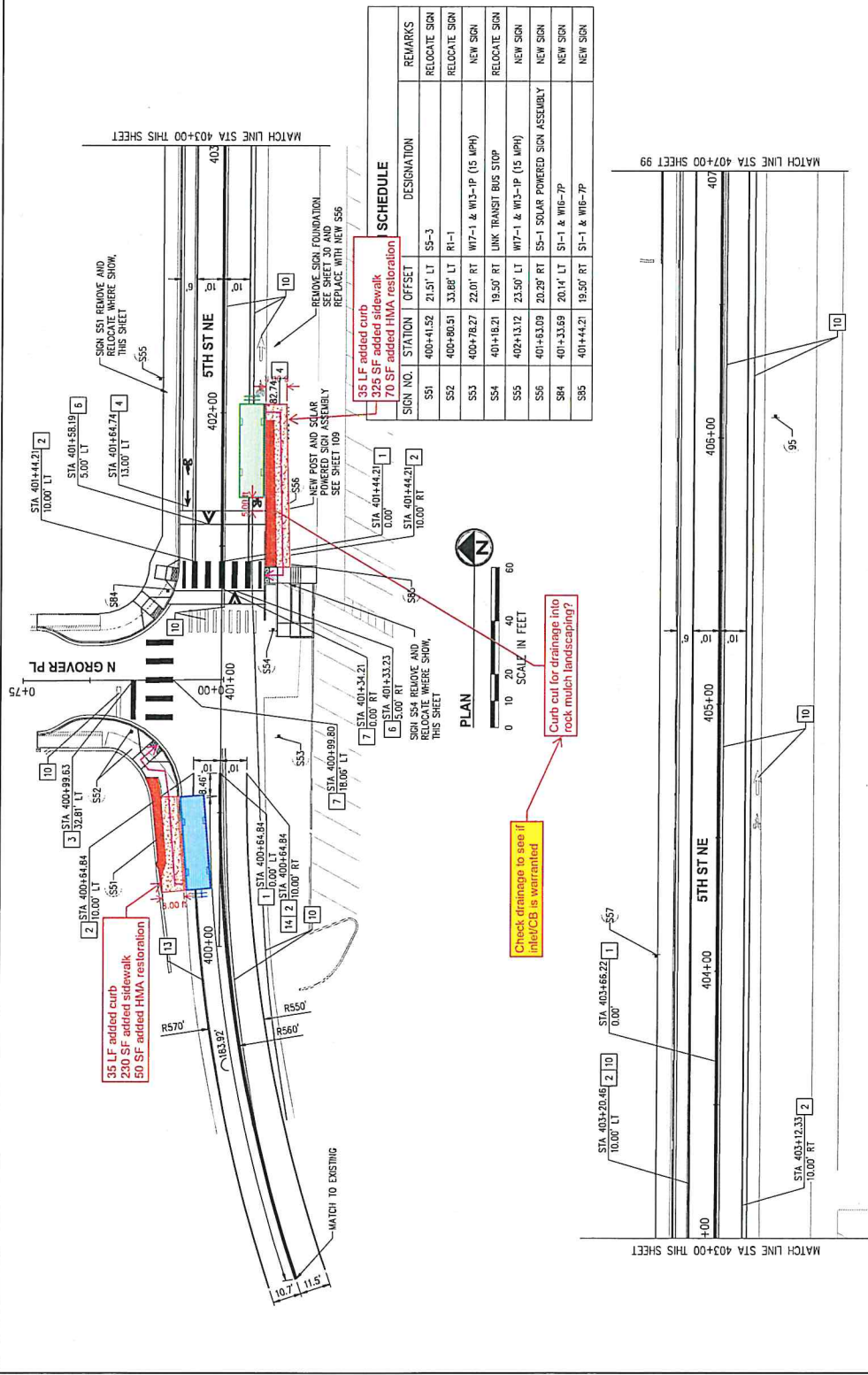
EAST WENATCHEE SAFE ROUTES TO SCHOOL KENROY ELEMENTARY (SCH A)

CHANNELIZATION PLAN
5TH STREET NE
STA 108+50 TO 115+00 (SCH A)

RPG PROJECT No. 19069A | SHT 96 OF 153

- GENERAL NOTES**
- SEE GENERAL PROJECT NOTES, SHEET 2.
 - CONTRACTOR SHALL REMOVE ALL EXISTING CHANNELIZATION THAT IS IN CONFLICT WITH NEW CHANNELIZATION BY GRINDING.
 - ALL NEW AND RELOCATED SIGNS SHALL HAVE NEW POSTS, POST BASES, AND HARDWARE IN ACCORDANCE WITH WSDOT STANDARD PLANS, SECTION C AND DETAIL ON SHEET 9.
 - ALL NEW PAVEMENT MARKINGS SHALL CONFORM TO THE LATEST EDITION OF THE WSDOT STANDARD SPECIFICATIONS AND STANDARD PLANS, SECTION M.
 - INSTALL SIGNS IN PEDESTRIAN AREAS SHALL BE LOCATED OUTSIDE OF PEDESTRIAN ACCESS ROUTE AND A MINIMUM OF 7.0' ABOVE THE WALKING SURFACE.
 - ALL NEW SIGNS SHALL BE SIZED PER MUTCD 28.03 AND 28.04 FOR CONVENTIONAL ROADS. RELOCATED SIGNS ARE ASSUMED TO MEET MUTCD REQUIREMENTS, NOTIFY THE ENGINEER IF DEFICIENCIES ARE ENCOUNTERED.
 - FOR DETAILS OF NEW POWERED SIGNS, SEE ILLUMINATION PLANS, SHEETS 100-110.
 - EXISTING SOLAR POWERED SIGNS ARE TO BE RELOCATED AS SHOWN ON THESE PLANS. ALL SIGNS SHALL BE RELOCATED ON NEW FOUNDATIONS AND ANCHOR BOLTS PER MANUFACTURER'S RECOMMENDATION.
 - CONTRACTOR SHALL VERIFY ALL DIMENSIONS USING NEW POSTS AS SHOWN ON THESE PLANS. CONTRACTOR MAY USE EXISTING POST WITH APPROVAL FROM THE ENGINEER.
 - EXISTING SIGNS NOT EXPLICITLY NOTED ON PLANS SHALL BE PROTECTED AND REMAIN IN PLACE.
 - FOR STANDARD SIGN DESIGNATION INFO SEE SHEET 97.

- CHANNELIZATION NOTES**
- PAINT LANE, 4" DOUBLE CENTERLINE, YELLOW PAINT, STRIPING PER WSDOT STANDARD PLAN M-20.10.
 - PAINT LANE, 4" WHITE PAINT EDGE LINE & SOLID LANE LINE PER WSDOT STANDARD PLAN M-20.10.
 - PLASTIC STOP LINE, 18" THERMOPLASTIC STOP LINE PER WSDOT STANDARD PLAN M-24.60.
 - PLASTIC BIKE LANE SYMBOL, BIKE RIDER AND AID BIKE LANE ARROW PER WSDOT STANDARD PLAN M-9.50-30Z.
 - PLASTIC SPEED BUMPS PER DETAIL (SEE SHEET 10).
 - PLASTIC CROSSWALK LINE, 10' LENGTH THERMOPLASTIC CROSSWALK LINES PER WSDOT STANDARD PLAN M-15.10. SPACING MARKS AS SHOWN ON THE PLANS, VERIFY WITH ENGINEER IN THE FIELD.
 - PRESERVE EXISTING STRIPING/PAVEMENT MARKING TO REMAIN.
 - REMOVE CONFLICTING CHANNELIZATION.
 - CONTRACTOR IS TO ALIGN NEW CHANNELIZATION WITH EXISTING CHANNELIZATION.
 - TAPER TO MATCH TO EXISTING CHANNELIZATION.



SCHEDULE

SIGN NO.	STATION	OFFSET	DESIGNATION	REMARKS
S51	400+41.52	21.51' LT	S5-3	RELOCATE SIGN
S52	400+80.31	33.86' LT	R1-1	RELOCATE SIGN
S53	400+78.27	22.01' RT	W17-1 & W13-IP (15 MPH)	NEW SIGN
S54	401+18.21	19.50' RT	LINK TRANSIT BUS STOP	RELOCATE SIGN
S55	402+13.12	23.50' LT	W17-1 & W13-IP (15 MPH)	NEW SIGN
S56	401+83.09	20.29' RT	S5-1 SOLAR POWERED SIGN ASSEMBLY	NEW SIGN
S57	401+33.69	20.14' LT	S1-1 & W16-7P	NEW SIGN
S58	401+44.21	19.50' RT	S1-1 & W16-7P	NEW SIGN

SIGN SCHEDULE

SIGN NO.	STATION	OFFSET	DESIGNATION	REMARKS
S57	404+06.16	23.00' LT	W1-4	RELOCATE SIGN
S58	406+07.70	20.42' RT	DOUBLE FINES IN SCHOOL ZONE	RELOCATE SIGN

APPROVED BY

DATE	BY	APPROVAL

REVISIONS

NO.	DATE	BY	DESCRIPTION

APPROVED BY

ENGINEERING MANAGER	DATE
PROJECT MANAGER	DATE
DRAWN BY	DATE
CHECKED BY	DATE

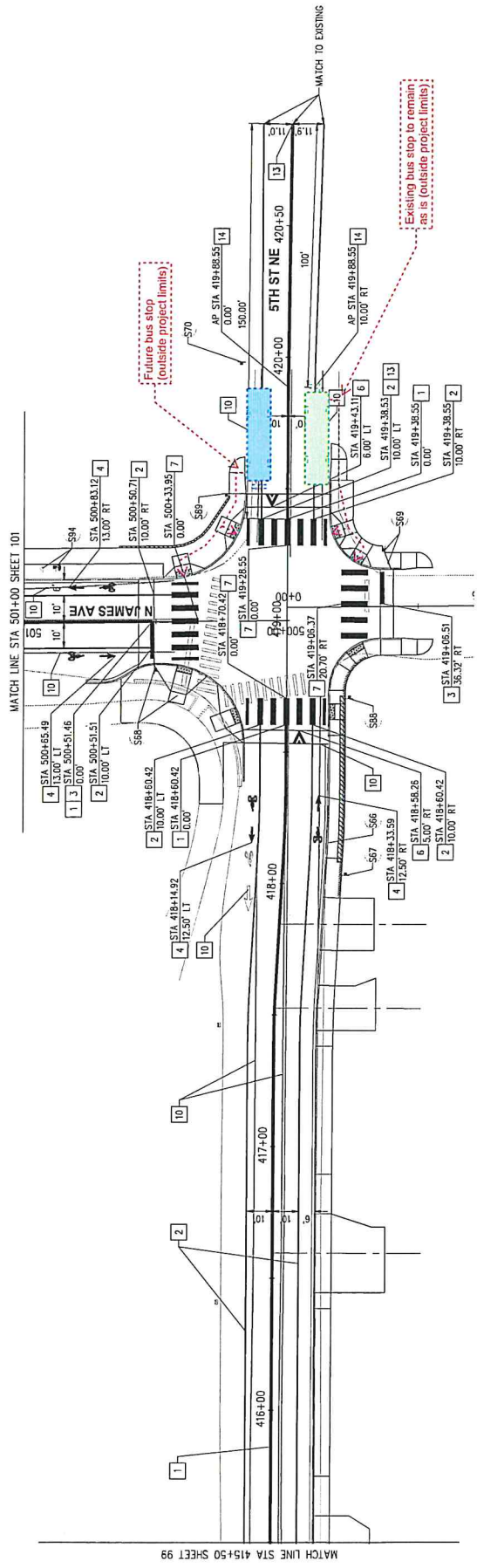
CONFORMED PLANS
JUNE 2023

KPG CONSULTANTS
125 Milwaukee Avenue, Suite 222
Waukegan, WI 53091 | 920.632.7111
State St. | Thomas | POC.com

EAST WENATCHEE SAFE ROUTES TO SCHOOL STERLING INTERMEDIATE (SCH B)

CHANNELIZATION PLAN
5TH STREET NE
STA 400+00 TO STA 407+00 (SCH B)

KPG PROJECT No. 19068A | SHEET 98 OF 153



GENERAL NOTES

- SEE GENERAL PROJECT NOTES, SHEET 2.
- CONTRACTOR SHALL REMOVE ALL EXISTING CHANNELIZATION THAT IS IN CONFLICT WITH NEW CHANNELIZATION BY GRADING.
- ALL NEW AND RELOCATED SIGNS SHALL HAVE NEW POSTS, POST BASES, AND HARDWARE IN ACCORDANCE WITH WSDOT STANDARD PLANS, SECTION G AND DETAIL ON SHEET 9.
- ALL NEW PAVEMENT MARKINGS SHALL CONFORM TO THE LATEST EDITION OF THE WSDOT STANDARD SPECIFICATIONS AND STANDARD PLANS, SECTION M.
- INSTALL SIGNS IN PEDESTRIAN AREAS SHALL BE LOCATED OUTSIDE OF PEDESTRIAN ACCESS ROUTE AND A MINIMUM OF 7.0' ABOVE THE WALKING SURFACE.
- ALL NEW SIGNS SHALL BE SIZED PER MUTCD 28.03 AND 28.04 FOR CONVENTIONAL ROADS. RELOCATED SIGNS ARE ASSUMED TO MEET MUTCD REQUIREMENTS UNLESS NOTED OTHERWISE BY THE ENGINEER.
- FOR DETAILS OF NEW POWERED SIGNS, SEE ILLUMINATION PLANS, SHEETS 103-116.
- EXISTING SOLAR POWERED SIGNS ARE TO BE RELOCATED AS SHOWN ON THESE PLANS. CONTRACTOR SHALL VERIFY THE MANUFACTURER'S AND ANCHOR BOLTS PER MANUFACTURER'S RECOMMENDATION.
- CONTRACTOR SHALL RELOCATE MARKERS USING NEW POSTS, AS SHOWN ON DETAIL SHEET 9. CONTRACTOR MAY USE EXISTING POST WITH APPROVAL FROM THE ENGINEER.
- EXISTING SIGNS NOT EXPLICITLY NOTED ON PLANS SHALL BE PROTECTED AND REMAIN IN PLACE.
- FOR STANDARD SIGN DESIGNATION INFO SEE SHEET 97.

CHANNELIZATION NOTES

- PAINT LINE, 4" DOUBLE CENTERLINE, YELLOW PAINT, STRIPING PER WSDOT STANDARD PLAN M-20.10.
- PAINT LINE, 4" WHITE PAINT EDGE LINE & SOLID LANE LINE PER WSDOT STANDARD PLAN M-20.10.
- PLASTIC STOP LINE, 18" THERMOPLASTIC STOP LINE PER WSDOT STANDARD PLAN M-24.60.
- PLASTIC BIKE LANE SYMBOL, BIKE RIDER AND BIKE LANE ARROW PER WSDOT STANDARD PLAN M-9.50-02.
- PLASTIC SPEED BUMP SYMBOL PER DETAIL (SEE SHEET 10).
- PLASTIC CROSSWALK LINE, 10' LENGTH THERMOPLASTIC CROSSWALK LINES PER WSDOT STANDARD PLAN M-15.10. SPACING MARKS AS SHOWN ON THE PLANS, VERIFY WITH ENGINEER IN THE FIELD.
- REMOVE CONFLICTING CHANNELIZATION.
- CONTRACTOR IS TO ALIGN NEW CHANNELIZATION WITH EXISTING CHANNELIZATION.
- TAPER TO MATCH TO EXISTING CHANNELIZATION.

SIGN SCHEDULE

SIGN NO.	STATION	OFFSET	DESIGNATION	REMARKS
S86	418+16.24	16.97 RT	S1-1 & PEDESTRIAN W/0'	RELOCATE SIGN
S87	418+04.35	24.00 RT	W17-1 & W13-1P (15 MPH)	NEW SIGN
S88	418+80.88	50.52' LT	R1-1	RELOCATE SIGN
S89	419+26.93	37.15' RT	R1-1	RELOCATE SIGN
S70	419+98.11	16.00' LT	W17-1 & W13-1P (15 MPH)	NEW SIGN
S83	418+70.42	24.00' RT	S1-1 & W16-7P	NEW SIGN
S89	419+48.11	23.50' LT	S1-1 & W16-7P	NEW SIGN
S94	500+87.98	20.80' RT	S5-1 SOLAR POWERED SIGN ASSEMBLY	RELOCATE SIGN



KPG
P.SOMAS
 WENATCHEE
 233 West Main Street, Suite 200
 Steubenville, WA 98581 | PPS.com



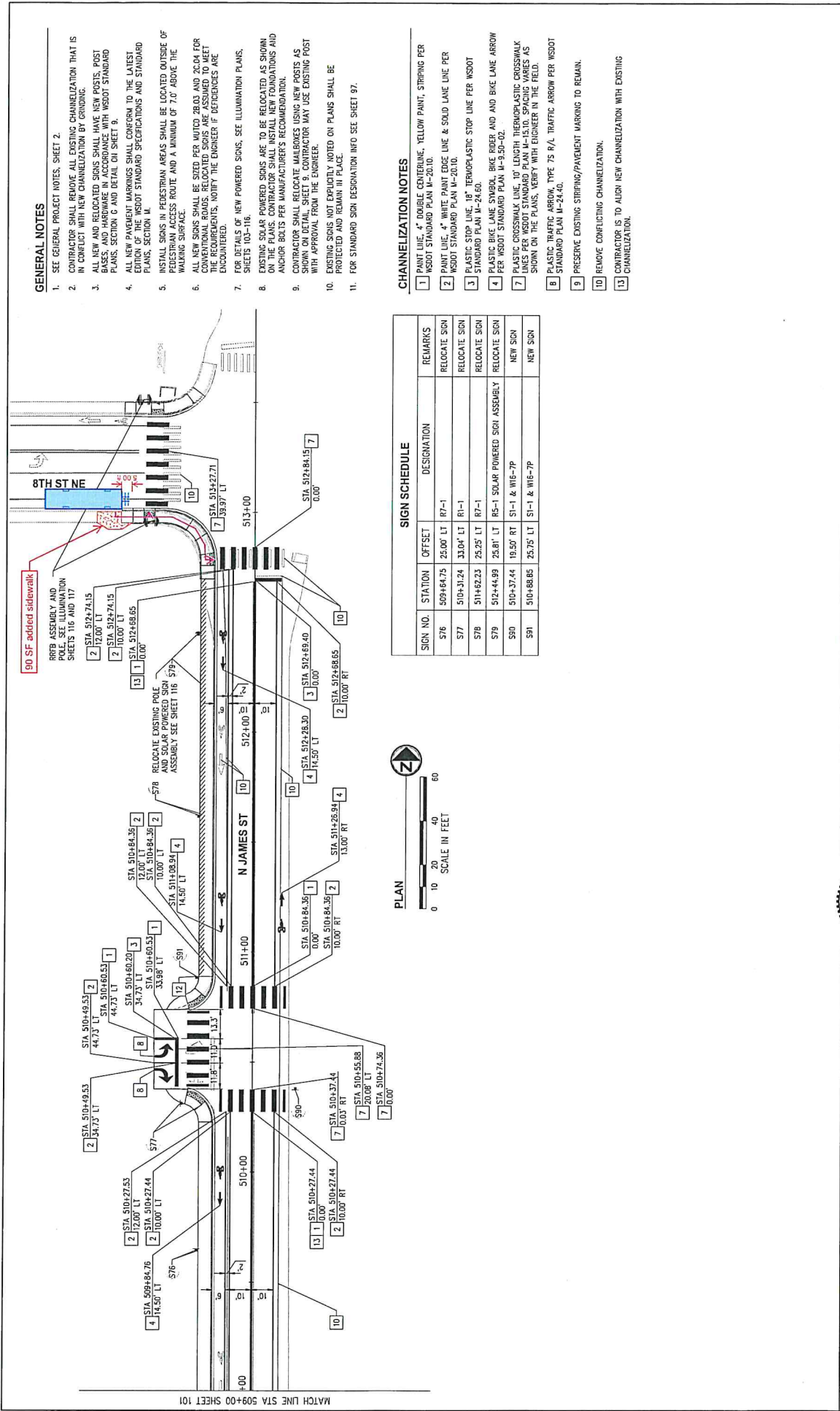
**EAST WENATCHEE
 SAFE ROUTES TO SCHOOL
 STERLING INTERMEDIATE (SCH B)**

CHANNELIZATION PLAN
 5TH STREET NE
 STA 415+50 TO STA 420+50 (SCH B)

KPG PROJECT No. 19068A | SHT 100 OF 153

APPROVED BY	DATE
ENGINEERING MANAGER	DATE
PROJECT MANAGER	DATE
CHECKED BY	DATE

REVISIONS	DATE	BY



GENERAL NOTES

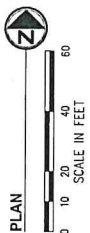
1. SEE GENERAL PROJECT NOTES, SHEET 2.
2. CONTRACTOR SHALL REMOVE ALL EXISTING CHANNELIZATION THAT IS IN CONFLICT WITH NEW CHANNELIZATION BY CRONING.
3. ALL NEW AND RELOCATED SIGNS SHALL HAVE NEW POSTS, POST BASES, AND HARDWARE IN ACCORDANCE WITH WSDOT STANDARD PLANS, SECTION C AND DETAIL ON SHEET B.
4. ALL NEW PAVEMENT MARKINGS SHALL CONFORM TO THE LATEST EDITION OF THE WSDOT STANDARD SPECIFICATIONS AND STANDARD PLANS, SECTION M.
5. INSTALL SIGNS IN PEDESTRIAN AREAS SHALL BE LOCATED OUTSIDE OF PEDESTRIAN ACCESS ROUTE, AND A MINIMUM OF 7.0' ABOVE THE WALKING SURFACE.
6. ALL NEW SIGNS SHALL BE SIZED PER MUTCD 280.3 AND 2C.04 FOR CONVENTIONAL ROADS. RELOCATED SIGNS ARE ASSUMED TO MEET REQUIREMENTS, UNLESS THE ENGINEER'S RECOMMENDATIONS ARE OTHERWISE NOTED.
7. FOR DETAILS OF NEW POWERED SIGNS, SEE ILLUMINATION PLANS, SHEETS 103-116.
8. EXISTING SOLAR POWERED SIGNS ARE TO BE RELOCATED AS SHOWN ON THE PLANS. CONTRACTOR SHALL MEET ALL REQUIREMENTS AND ANCHOR BOLTS PER MANUFACTURER'S RECOMMENDATION.
9. CONTRACTOR SHALL RELOCATE MAILBOXES USING NEW POSTS AS SHOWN ON DETAIL SHEET B. CONTRACTOR MAY USE EXISTING POST WITH APPROVAL FROM THE ENGINEER.
10. EXISTING SIGNS NOT EXPLICITLY NOTED ON PLANS SHALL BE PROTECTED AND REMAIN IN PLACE.
11. FOR STANDARD SIGN DESIGNATION INFO SEE SHEET 97.

CHANNELIZATION NOTES

1. PAINT LINE, 4" DOUBLE CENTERLINE, YELLOW PAINT, STRIPING PER WSDOT STANDARD PLAN M-20.10.
2. PAINT LINE, 4" WHITE PAINT EDGE LINE & SOLID LANE LINE PER WSDOT STANDARD PLAN M-20.10.
3. PLASTIC STOP LINE, 18" THERMOPLASTIC STOP LINE PER WSDOT STANDARD PLAN M-24.60.
4. PLASTIC BIKE LANE SYMBOL, BIKE RIBBER AND BIKE LANE ARROW PER WSDOT STANDARD PLAN M-3-50-02.
5. PLASTIC CROSSWALK LINE, 10' LENGTH THERMOPLASTIC CROSSWALK LINES PER WSDOT STANDARD PLAN M-13.10, SPACING VARIES AS SHOWN ON THE PLANS, VERIFY WITH ENGINEER IN THE FIELD.
6. PLASTIC TRAFFIC ARROW, TYPE 75 R/L TRAFFIC ARROW PER WSDOT STANDARD PLAN M-24.40.
7. PRESERVE EXISTING STRIPING/PAVEMENT MARKING TO REMAIN.
8. REMOVE CONFLICTING CHANNELIZATION.
9. CONTRACTOR IS TO ALIGN NEW CHANNELIZATION WITH EXISTING CHANNELIZATION.

SIGN SCHEDULE

SIGN NO.	STATION	OFFSET	DESIGNATION	REMARKS
S76	509+64.75	25.00' LT	R7-1	RELOCATE SIGN
S77	510+31.24	33.04' LT	R1-1	RELOCATE SIGN
S78	511+62.23	25.25' LT	R7-1	RELOCATE SIGN
S79	512+44.99	25.81' LT	RS-1 SOLAR POWERED SIGN ASSEMBLY	RELOCATE SIGN
S80	510+37.44	19.50' RT	S1-1 & W6-7P	NEW SIGN
S81	510+88.85	25.75' LT	S1-1 & W6-7P	NEW SIGN



			EAST WENATCHEE SAFE ROUTES TO SCHOOL STERLING INTERMEDIATE (SCH B)	CHANNELIZATION PLAN JAMES ST STA 500+00 TO END (SCH B)	KPG PROJECT No. 19088A SHT 102 OF 163
		CONFORMED PLANS JUNE 2023			
APPROVED BY: _____ ENGINEERING MANAGER		DATE: _____ PROJECT MANAGER		DATE: _____ PROJECT ENGINEER	